

# Cynomolgus IL-17A Protein; His Tag

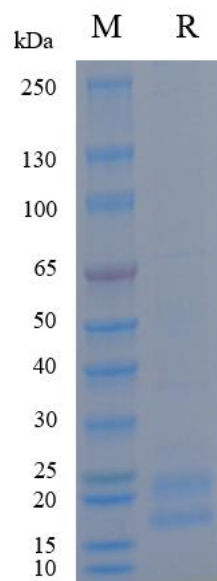
## Product Information

<b>Product Name</b>	Cynomolgus IL-17A Protein; His Tag
<b>Storage temp.</b>	Store at $\leq -70^{\circ}\text{C}$ , stable for 6 months after receipt. Recommend to aliquot the protein into smaller quantities for optimal storage. Please minimize freeze-thaw cycles.
<b>Catalog# / Size</b>	<b>GM-88036RP-100 / 100 <math>\mu\text{g}</math></b> <b>GM-88036RP-1000 / 1 mg</b>

## Protein Information

<b>Alternative Names</b>	IL-17A, Interleukin-17A, CTLA-8, IL-17
<b>Source</b>	Cynomolgus IL-17A Protein; His Tag (GM-88036RP) is expressed from human 293 cells (HEK-293). It contains Gly 24 - Ala 155 (Accession # A0A2K5TTB0). This protein carries a His tag at the N-terminus.
<b>Purity</b>	> 90% as determined by SDS-PAGE
<b>Endotoxin</b>	< 1 EU/ $\mu\text{g}$ , determined by LAL gel clotting assay
<b>Predicted Mol Mass</b>	15.2 KDa
<b>Formulation</b>	Supplied as a 0.2 $\mu\text{m}$ filtered solution of PBS, pH7.2-7.4.
<b>Description</b>	<p>IL-17A (Interleukin-17A, also known as CTLA-8) is a cytokine produced by T cells and belongs to the IL-17 family. It plays a critical role in many immune responses, particularly in the regulation of inflammation and autoimmune diseases. IL-17A promotes inflammatory responses and participates in tissue repair by stimulating other immune cells, such as macrophages and fibroblasts, to produce pro-inflammatory cytokines and chemokines.</p> <p>IL-17A plays an important role in various diseases, such as rheumatoid arthritis, psoriasis, and several chronic inflammatory conditions. Due to its significance in pathological processes, IL-17A and its signaling pathways have become a focal point of research in the biopharmaceutical field, with targeted therapies being developed to improve the prognosis of patients with these conditions.</p>

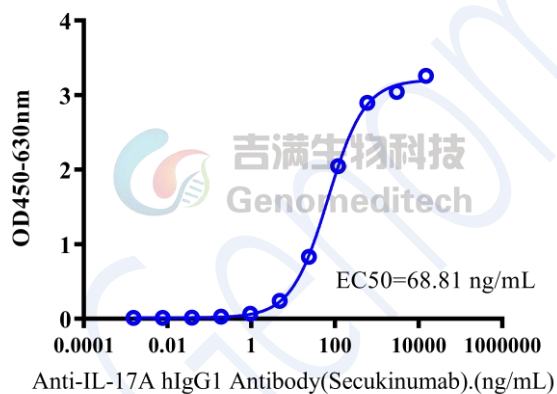
## SDS-PAGE



On SDS-PAGE under reducing (R) condition. The gel was stained overnight with Coomassie Blue. The purity of the protein is greater than 90%.

## Bioactivity-ELISA

**Bioactivity-ELISA**  
0.5  $\mu$ g Cynomolgus IL-17A Protein; His Tag of per well



Cynomolgus IL-17A Protein; His Tag (Catalog # GM-88036RP) was immobilized at 5  $\mu$ g/ml (100  $\mu$ L/well).

Increasing concentrations of Anti-IL-17A hIgG1 Antibody (Secukinumab) (Catalog # GM-27267AB) were added.